



2021

Product Catalog





“
Your **choice**, our **passion**”

Table of contents

About us	4
Our materials	6
Our collections	14
Washbasins	22
Bathtubs	46
Shower trays	54
Sinks	72
Countertops	82
Our colors	86
Maintenance	92
Cooperation	94



About us

Thanks to many years of activity and experience in project implementation of our B2B client's, Dremex is trusted in global markets. Comprehensive service allows for detailed refinement of each project. The choice of available materials, structures or colors gives customers the opportunity to create a dream product under their brand - Brand label. Dremex's offer also includes models made on the basis of our original projects, which are of huge interest and reflect the latest trends.

“ We work with **passion** ”

Multi-sector company DREMEXSp. z o. o. has been on the market since 1978. It is a multi-generation family business with traditions. At the turn of the century, Dremex began an adventure related to the production of marble and synthetic granite. Thanks to constant work on the development and improvement of the business, Dremex is now among the largest manufacturers in Europe.

We cooperate with renowned design offices, bathroom furniture manufacturers, wholesalers and even shipyards. Due to durability, quality, high aesthetics combined with light weight, our wares are used on many passenger ships and more. The main recipients are European manufacturers of bathroom furniture. Products are also used in many public facilities such as banks, hotels, hospitals as well as in private apartments and houses. We make wash basins, shower trays, bathtubs and sinks based on individual customer orders as well as our own forms.



Our materials

Our sanitary ware are made of materials which stand out among common conglomerates. The raw materials we use combine great durability and flexibility, and thanks to the use of innovative methods, we are able to subject them to advanced tooling.



Synthetic marble

A material with a uniform structure- combination of minerals, powdered marble and polyester resin. Products made of this material have an outer layer of polyester gelcoat.

Properties of synthetic marble:



High durability and mechanical strength, resistance to impact, damage and scratching, does not crack like natural stone, and the gelcoat coating protects it against all kinds of damage



Antibacterial properties



Unlike other materials, it does not require impregnation and specialized maintenance of the surface



Uniform texture, without any blemishes, seams or differential structure



Flexibility, resulting from the presence of resin in the composition of the material - the possibility of realization considerable dimensions projects



It is extremely light compared to natural stone

Synthetic marble is a material that stands out among typical conglomerates. It allows to satisfy the most sophisticated needs of our customers, enabling non-standard elegant furnishings and exclusive interiors. Due to the combination of natural minerals and resin, synthetic marble is extremely durable and resistant to damage. Thanks to the flexible properties of the resin, the forming possibilities are almost limitless.



The undeniable advantage of Solid Surface products is the possibility of repeated and traceless renovation without disassembly. Easiness to renovate causes that it can be used intensively for many years. The matte finish and the uniform structure of the Solid Surface make the wares fit perfectly into almost any design.

Solid Surface

Solid Surface, or onyx, is a mineral-acrylic plastic with versatile use. It is a homogeneous, porous material, consisting of 66.6% natural minerals and 33.4% resin. Used in the arrangement of modern interiors and in the sanitary industry.

Solid Surface Properties:



Durable, resistant to impact, damage and scratching, it does not crack like natural stone



Material has antibacterial properties



Easy to renovate - they can be renewed many times and in a very simple way



Does not require impregnation and specialist maintenance



Uniform texture, without any blemishes or seams



Huge arrangement possibilities- match perfectly to wood, steel, stone or glass

Quartz

Quartz is a very popular, durable, esthetic composite with a varied hue. At the client's request, we create aesthetic and functional quartz countertops and sinks. Composite sinks are made of a combination of natural mineral fillers and binders.

Properties of Quartz:



It is resistant to chemicals - the sinks do not discolor and are very easy to clean



Has antibacterial properties



It is characterized by high durability and mechanical strength, it is resistant to impacts, damage and scratches



Unlike other materials, it does not require impregnation and specialized maintenance of the surface



No dirt visible on the surface



It is available in a wide range of colors

The composition of our products consists of quartz sands in the amount of approx. 70% and approx. 30% of resins and dyes. The ratio and proportion of all ingredients used contribute to the high quality of our sinks. The high proportion of quartz gives unique smoothness. Thanks to quartz, our products are also characterized by a natural stone look, and thanks to epoxy resins - exceptional durability. Dremex Sp. z o.o. offers a wide range of colors of sinks - from white, through beige, brown, gray to deep black.

Our collections

To meet the expectations of the market, we decided to create three original collections. The idea that guided our designers during their work is to create a universal base that will be the starting point for our client's projects. We want to encourage customers to experiment with our concepts and, moreover, inspire them to create their own proposals. Our many years of experience and a rich machine park will help to implement almost every project.



Glow collection

A subtle cut on each product from this collection gives it originality and makes sanitary products not only essential bathroom equipment, but also elegant decorative elements.



Collection **products**



Washbasin
Glow Circle



Washbasin
Glow Square



Bathtub Glow



Shower Tray Glow

These are just some of the products we have to offer. You can see some of them in 360 ° panoramic view. To find out more, visit our website www.dremex.com.pl.



Cozy collection

The subdued, mellow line makes entirety unusually useful, both during designing and use of the bathroom. Comfort, ergonomics and convenience are the distinguishing features of collection.



Collection **products**



Washbasin Cozy



Shower Tray Cozy



Bathtub Cozy

These are just some of the products we have to offer. You can see some of them in 360 ° panoramic view. To find out more, visit our website www.dremex.com.pl.



Space collection

Stylish and timeless design that suits both modern and classic projects. All elements of the collection will be perfect for arranging large, extensive interiors. The collection is based on solid forms and distinguished by a wide, spacious bathtub.



Collection products



Washbasin
Space



Washbasin
Space Stand



Bathtub Space



Shower Tray Space

These are just some of the products we have to offer. You can see some of them in 360 ° panoramic view. To find out more, visit our website www.dremex.com.pl.



Washbasins

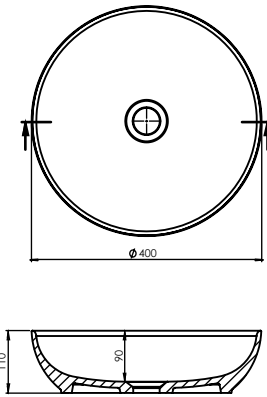
We produce oval, square and rectangular washbasins of various sizes and depths. At the customer's request, the washbasins can be made in various shapes and materials, such as gelcoat, Solid Surface or quartz. Contact us about the custom made washbasin.





Piccolo

Countertop washbasin

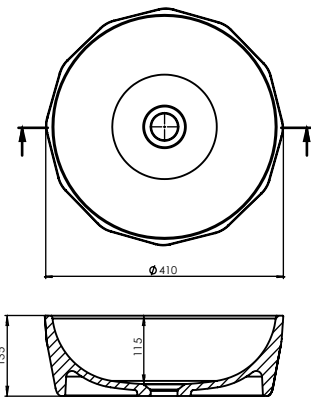


Dimensions	Ø 400x110
Overflow	no
Net weight	5,7
Number of pieces on a pallet	48



Geo

Countertop washbasin

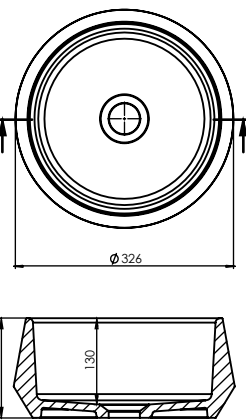


Dimensions	Ø 410x135
Overflow	no
Net weight	8,5
Number of pieces on a pallet	48



Brena

Countertop washbasin

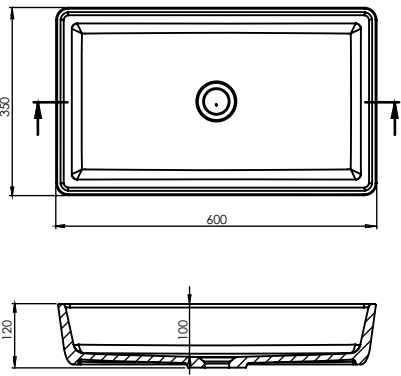


Dimensions	Ø 326x150
Overflow	no
Net weight	7,1
Number of pieces on a pallet	50



Carlos

Countertop washbasin

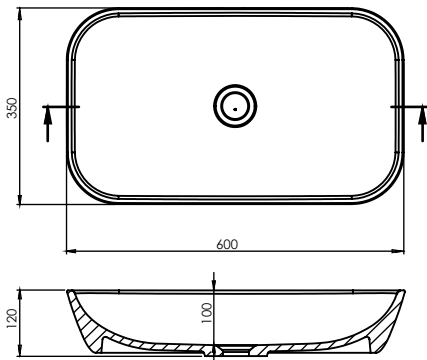


Dimensions	600x350x120
Overflow	no
Net weight	11,3
Number of pieces on a pallet	18



Chuck

Countertop washbasin

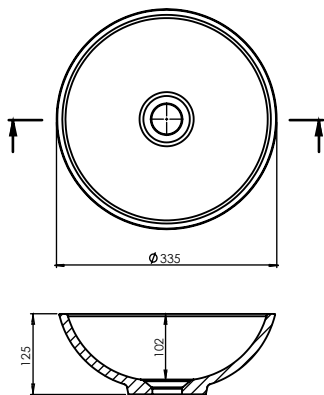


Dimensions	600x350x120
Overflow	no
Net weight	12
Number of pieces on a pallet	18



Trend 34

Countertop washbasin

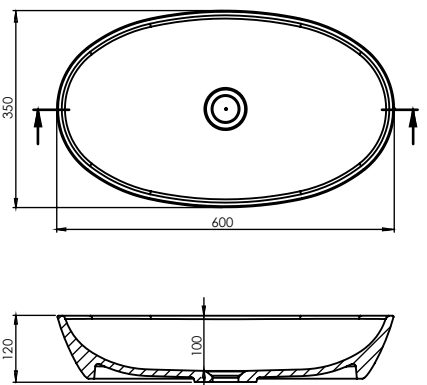


Dimensions	ø 335x125
Overflow	no
Net weight	3,6
Number of pieces on a pallet	50



Norris

Countertop washbasin

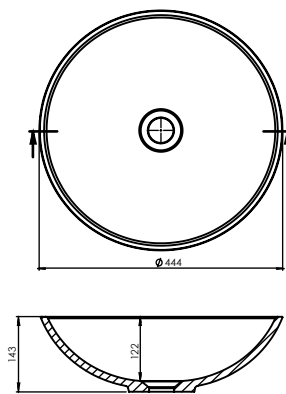


Dimensions	600x350x120
Overflow	no
Net weight	10,1
Number of pieces on a pallet	18



Trend 45

Countertop washbasin

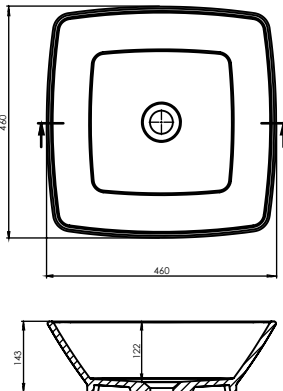


Dimensions	ø 444x143
Overflow	no
Net weight	5,6
Number of pieces on a pallet	48



Trend Quattro

Countertop washbasin

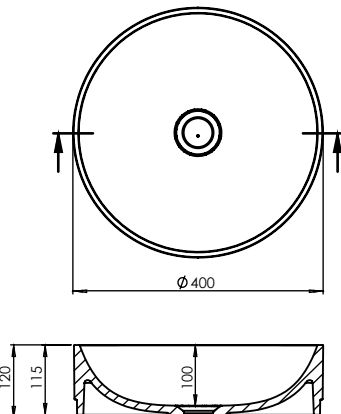


Dimensions	460x460x143
Overflow	no
Net weight	7,7
Number of pieces on a pallet	48



Glow Circle

Countertop washbasin

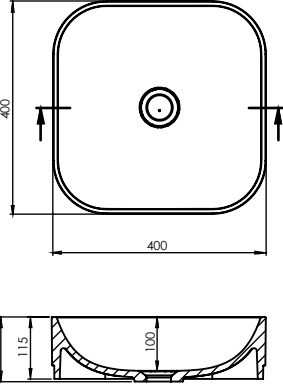


Dimensions	Ø 400x120
Overflow	no
Net weight	7,6
Number of pieces on a pallet	48



Glow Square

Countertop washbasin

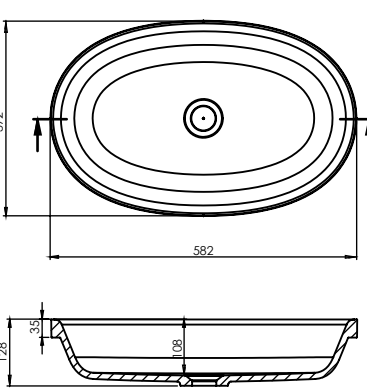


Dimensions	400x400x120
Overflow	no
Net weight	8,9
Number of pieces on a pallet	48



Cozy

Built-in washbasin

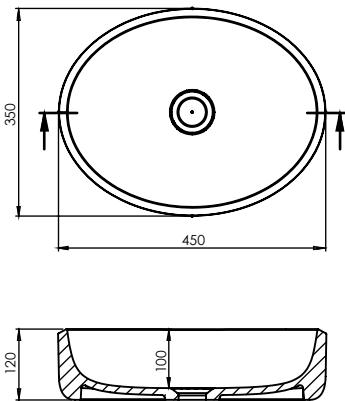


Dimensions	582x372x128
Overflow	no
Net weight	7,5
Number of pieces on a pallet	24



Space

Countertop washbasin

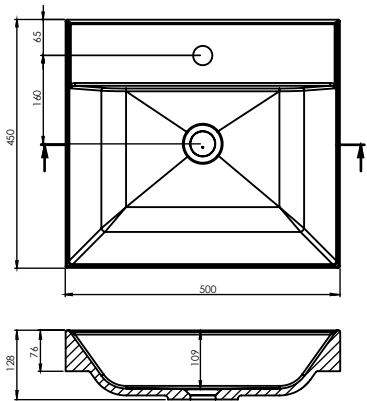


Dimensions	450x350x120
Overflow	no
Net weight	9,5
Number of pieces on a pallet	24



M-50

Over-counter + countertop washbasin

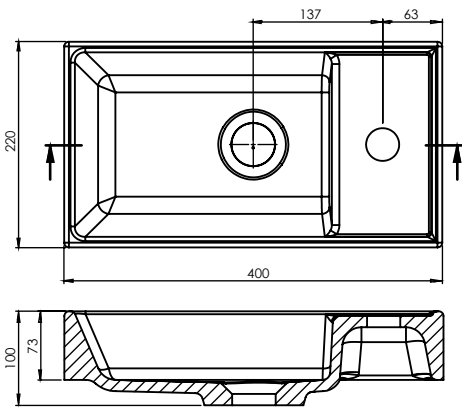


Dimensions	500x450x128
Overflow	no
Net weight	14
Number of pieces on a pallet	15



M-40

Over-counter + countertop washbasin

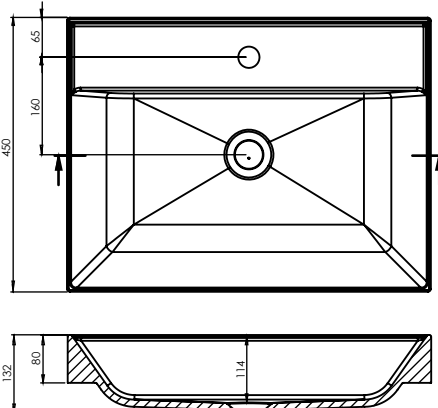


Dimensions	400x220x100
Overflow	no
Net weight	5,8
Number of pieces on a pallet	50



M-60

Over-counter + countertop washbasin

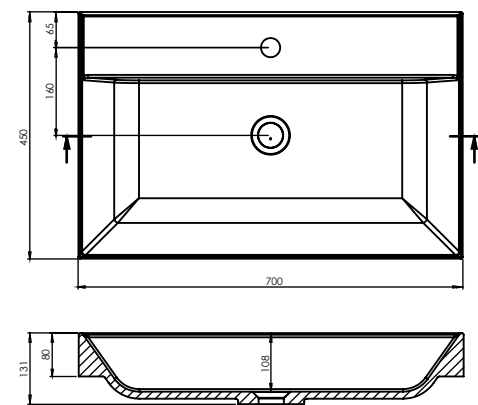


Dimensions	600x450x132
Overflow	no
Net weight	17,7
Number of pieces on a pallet	15



M-70

Over-counter + countertop washbasin

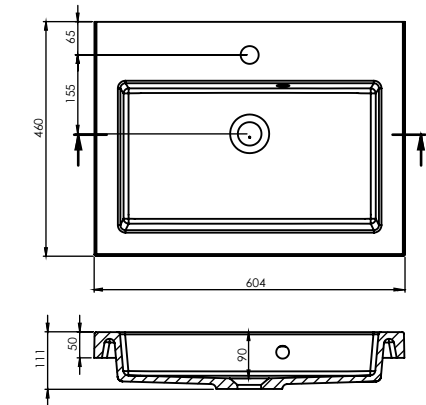


Dimensions	700x450x131
Overflow	no
Net weight	21
Number of pieces on a pallet	15



Quadra 604

Over-counter + countertop washbasin

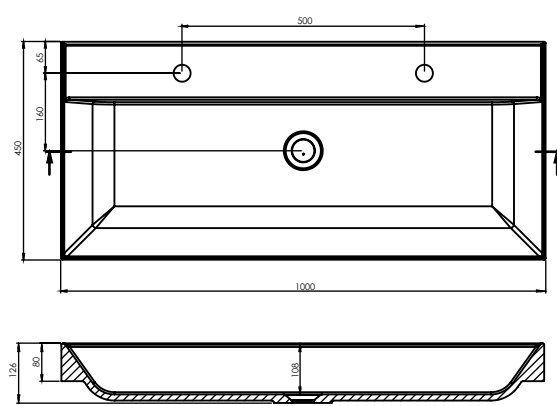


Dimensions	604x460x111
Overflow	external
Net weight	15
Number of pieces on a pallet	15



M-100

Over-counter + countertop washbasin

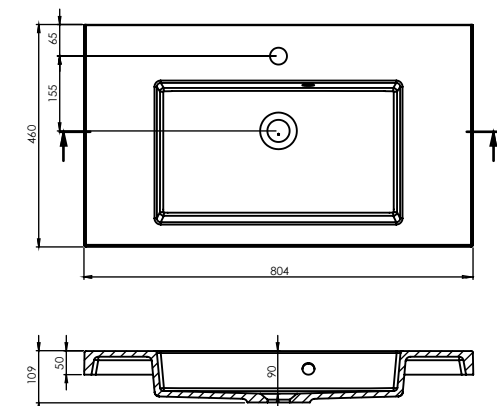


Dimensions	1000x450x126
Overflow	no
Net weight	29,5
Number of pieces on a pallet	12



Quadra 804

Over-counter + countertop washbasin

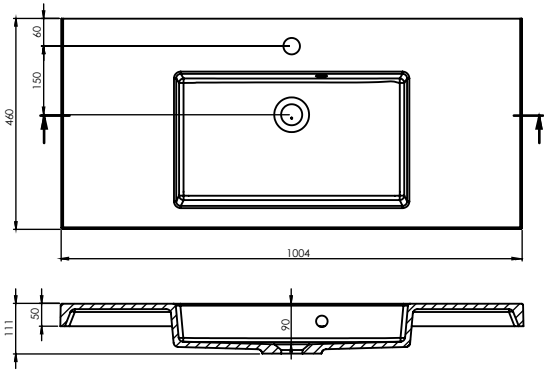


Dimensions	804x460x109
Overflow	external
Net weight	20
Number of pieces on a pallet	15



Quadra 1004

Over-counter + countertop washbasin

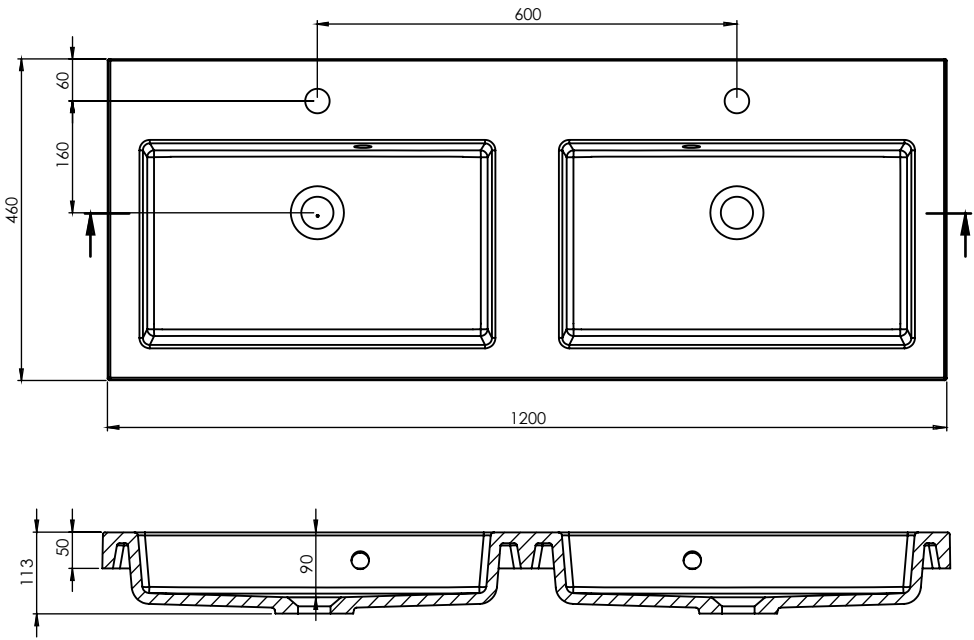


Dimensions	1004x460x111
Overflow	external
Net weight	22
Number of pieces on a pallet	12

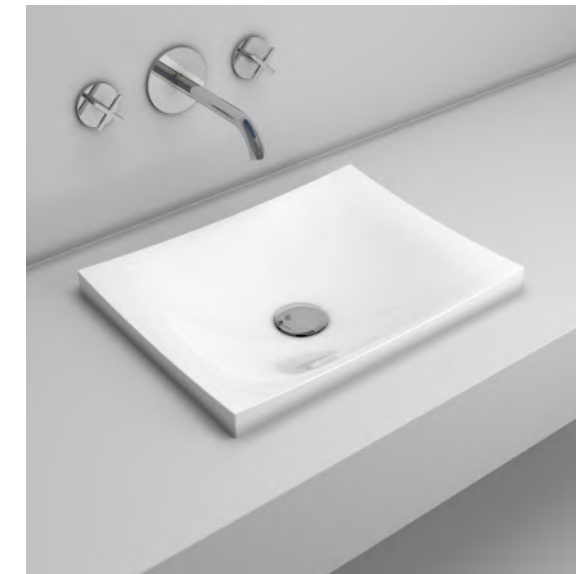


Quadra 1200 D

Over-counter + countertop washbasin

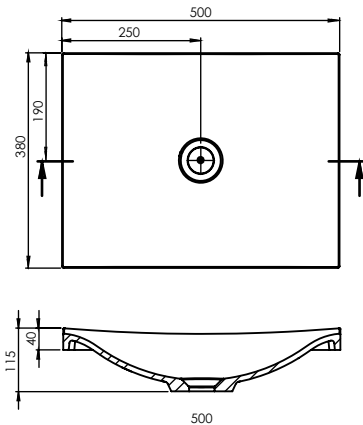


Dimensions	1200x460x113
Overflow	external
Net weight	30
Number of pieces on a pallet	12



Jazz 500

Built-in washbasin

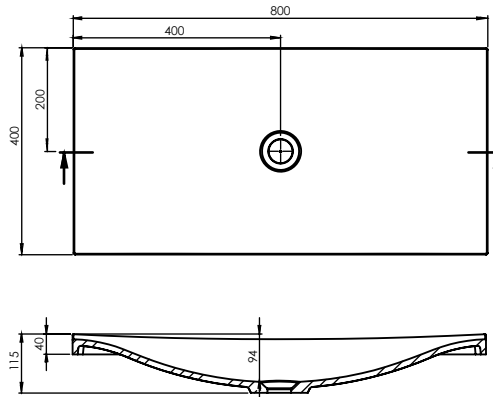


Dimensions	500x380x115
Overflow	no
Net weight	6,4
Number of pieces on a pallet	18



Jazz 800

Built-in washbasin

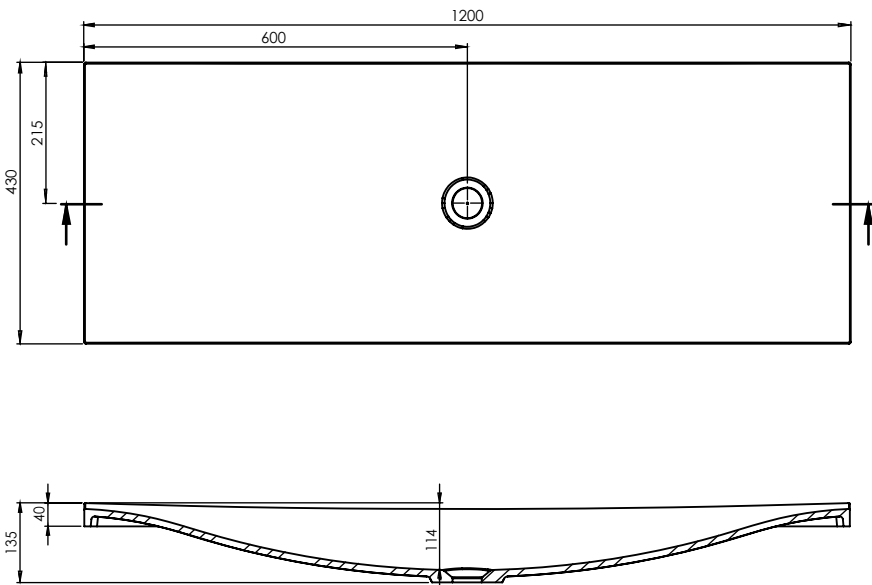


Dimensions	800x400x115
Overflow	no
Net weight	9,9
Number of pieces on a pallet	18



Jazz 1200

Built-in washbasin

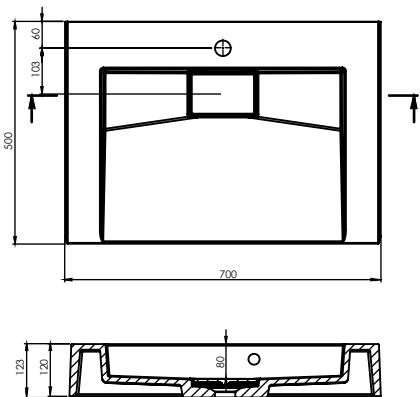


Dimensions	1200x430x135
Overflow	no
Net weight	15,4
Number of pieces on a pallet	12



Flat 700

Countertop + Wall Hung Basin

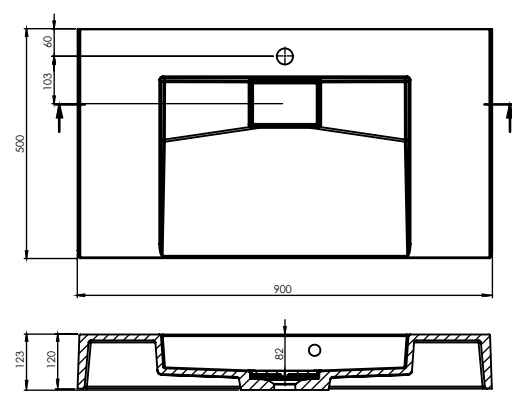


Dimensions	700x500x123
Overflow	external
Net weight	23,6
Number of pieces on a pallet	15



Flat 900

Countertop + wall-mounted basin

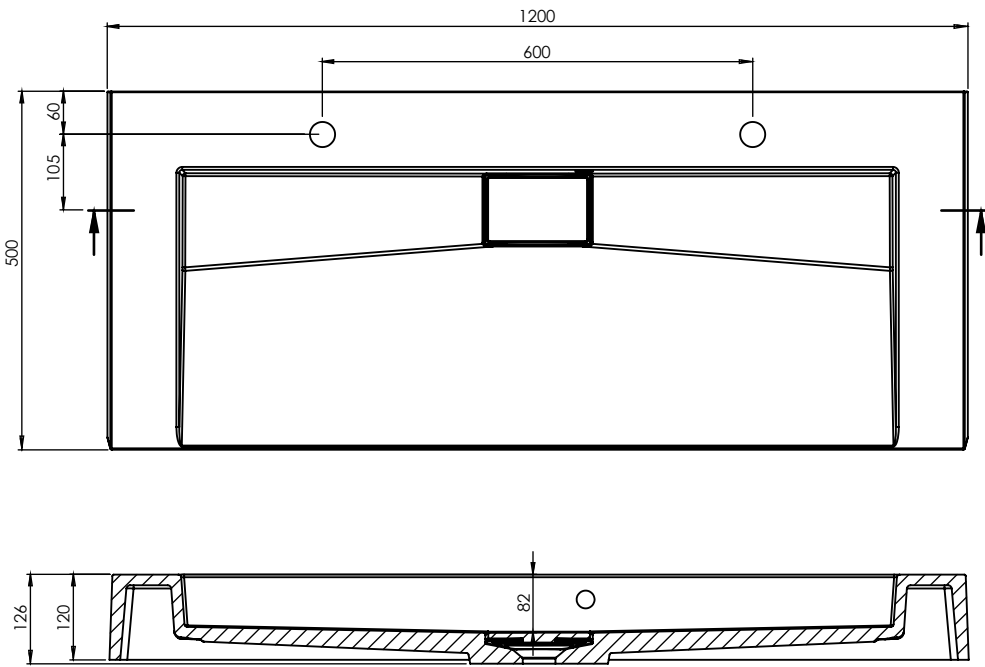


Dimensions	900x500x123
Overflow	external
Net weight	28,3
Number of pieces on a pallet	15



Flat 1200

Countertop + wall-mounted basin

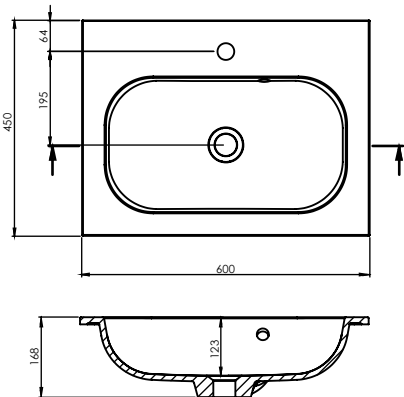


Dimensions	1200x500x126
Overflow	external
Net weight	38,6
Number of pieces on a pallet	12



Alice 600

Built-in washbasin

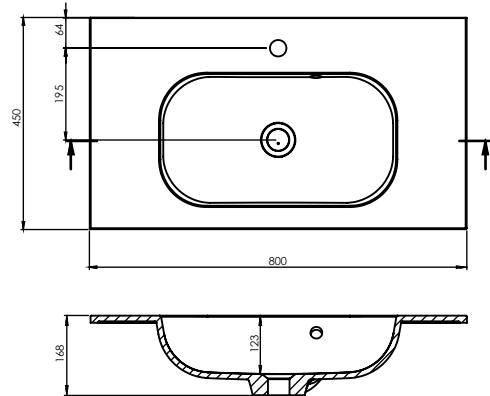


Dimensions	600x450x168
Overflow	integrated transfer
Net weight	10,8
Number of pieces on a pallet	15



Alice 800

Built-in washbasin

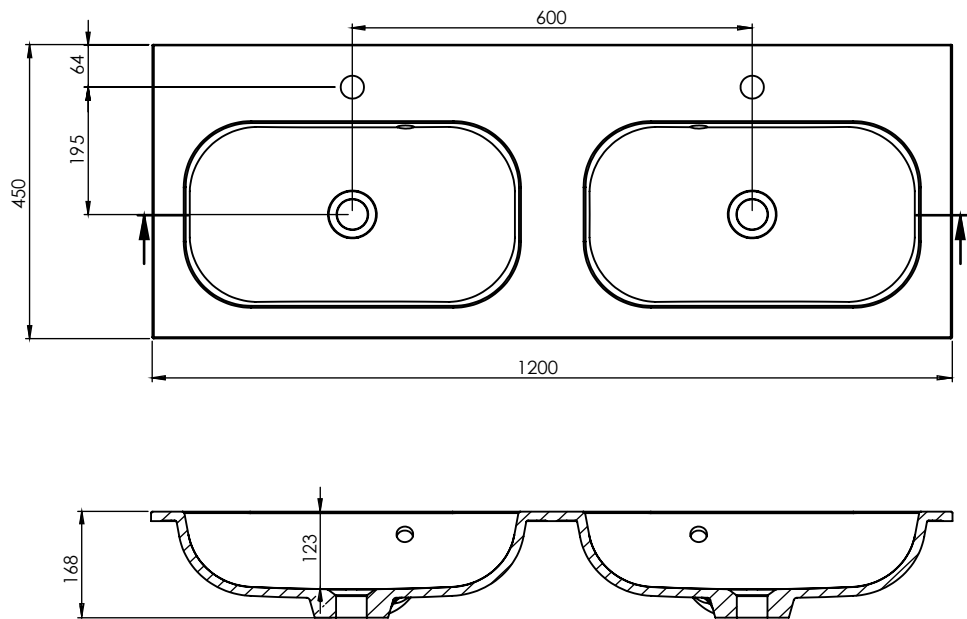


Dimensions	800x450x168
Overflow	integrated transfer
Net weight	13,2
Number of pieces on a pallet	15



Alice 1200 D

Built-in washbasin

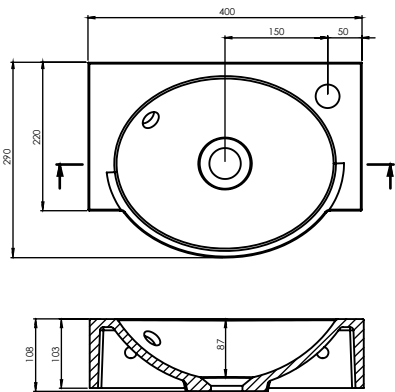


Dimensions	1200x450x168
Overflow	integrated transfer
Net weight	24,1
Number of pieces on a pallet	12



Mini

Countertop + wall-mounted basin

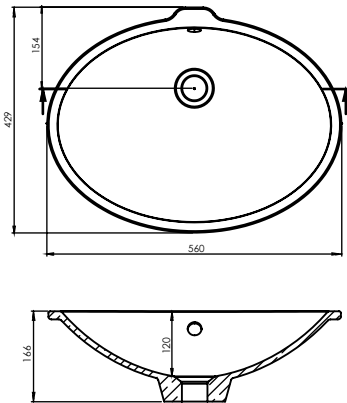


Dimensions	400x290x108
Overflow	external
Net weight	7,6
Number of pieces on a pallet	48



Cooper

Suspended washbasin

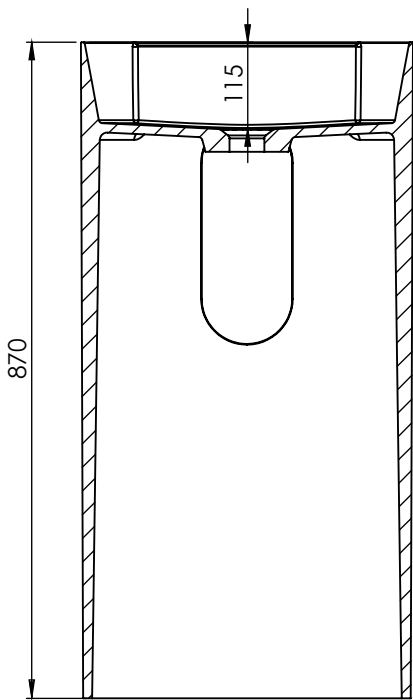
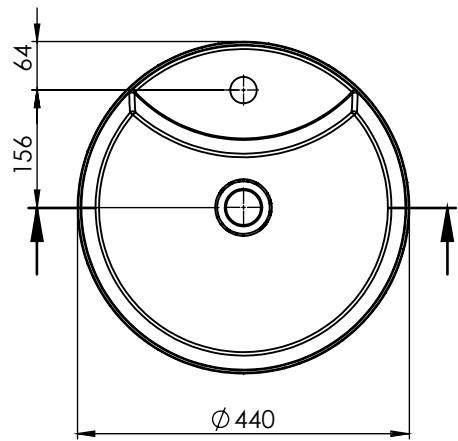


Dimensions	560x429x166
Overflow	integrated transfer
Net weight	6,4
Number of pieces on a pallet	15



Cone

Freestanding washbasin

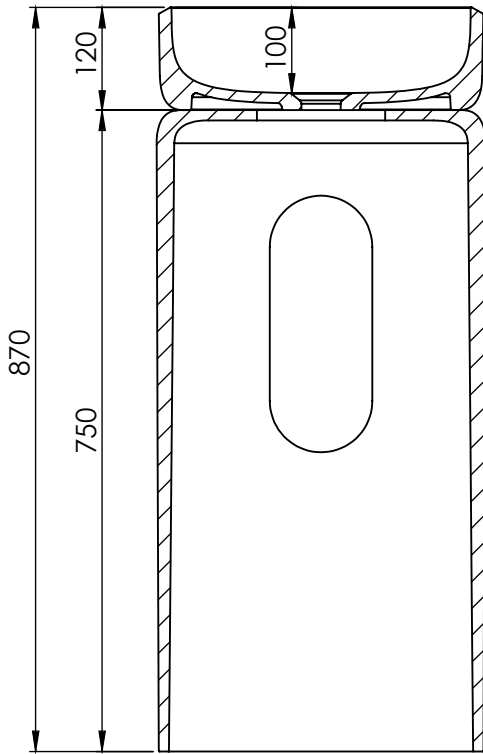
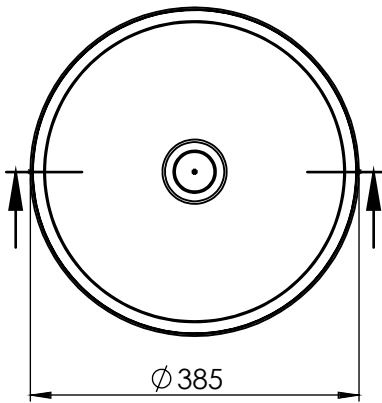


Dimensions	ø 440x870
Overflow	no
Net weight	46,2
Number of pieces on a pallet	4



Space Stand

Freestanding washbasin



Dimensions	Ø 385x870
Overflow	no
Net weight	40
Number of pieces on a pallet	4



Bathtubs

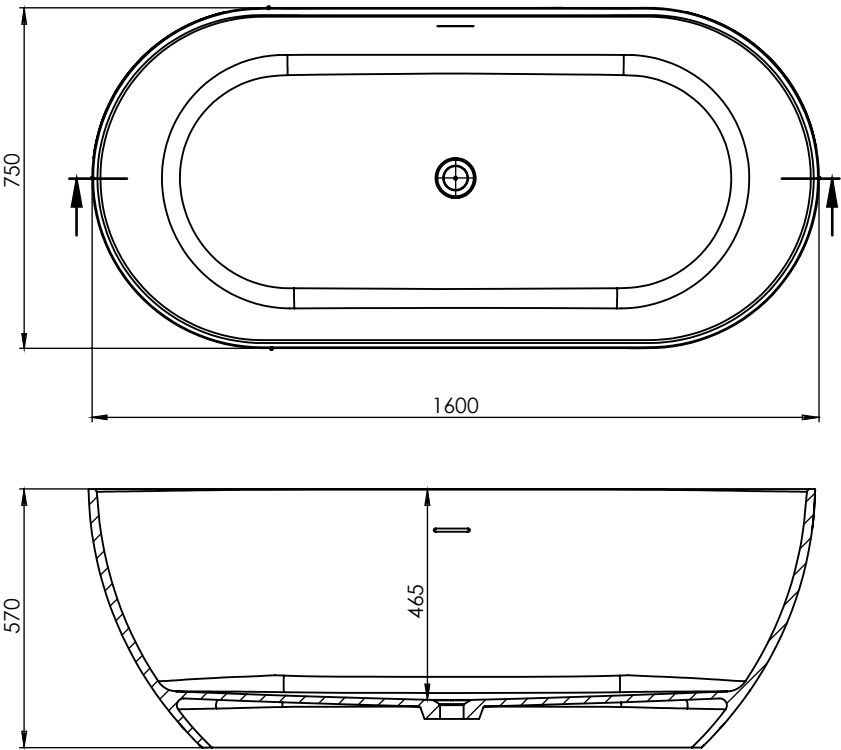
Extraordinarily elegant, original and, first of all, comfortable. Our bathtubs are designed from start to finish with the most demanding users in mind, for whom both appearance and comfort count. We offer a wide range of free-standing, corner, asymmetrical and rectangular bathtubs, made of Solid Surface or gelcoat covered.





Sense

Freestanding bathtub

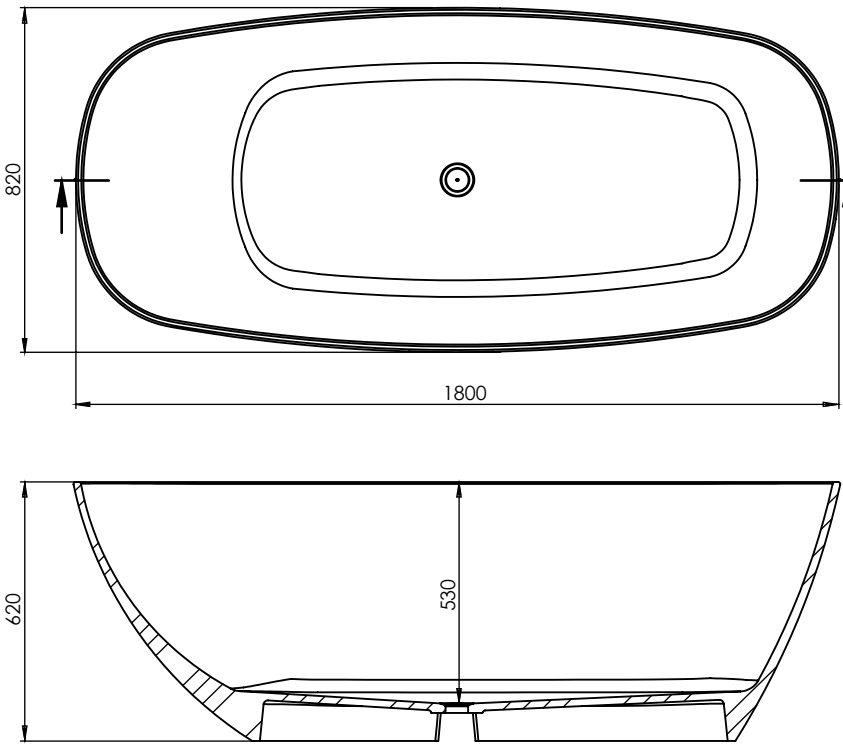


Dimensions	1600x750x570
Overflow	integrated transfer
Net weight	135
Capacity	290
Number of pieces on a pallet	1
Complete with	siphon



Eureka

Freestanding bathtub

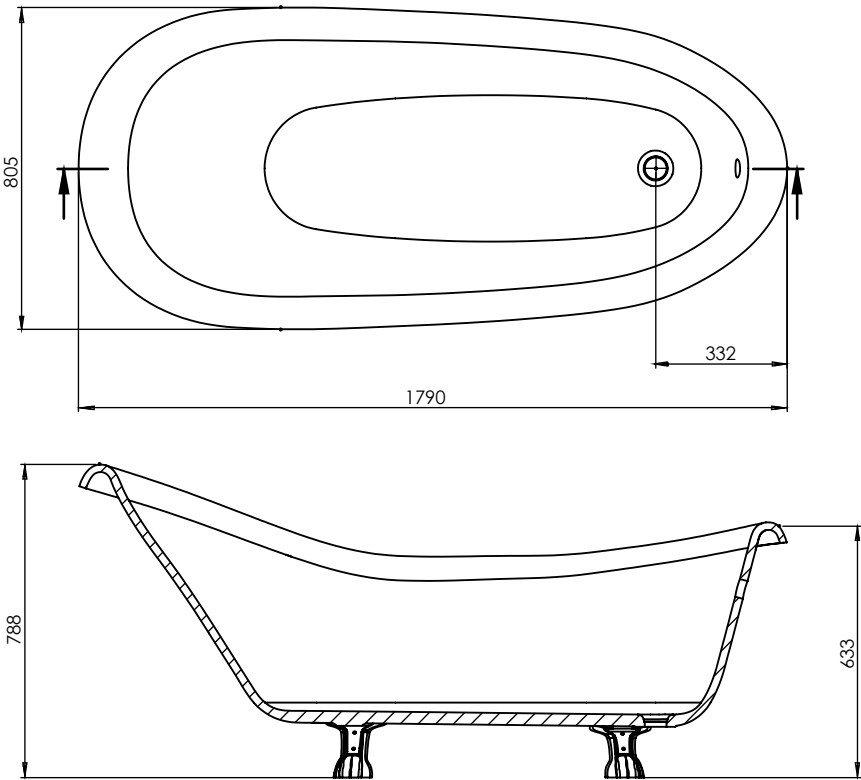


Dimensions	1800x820x620
Overflow	no
Net weight	140
Capacity	310
Number of pieces on a pallet	1
Complete with	siphon



Coco

Freestanding bathtub

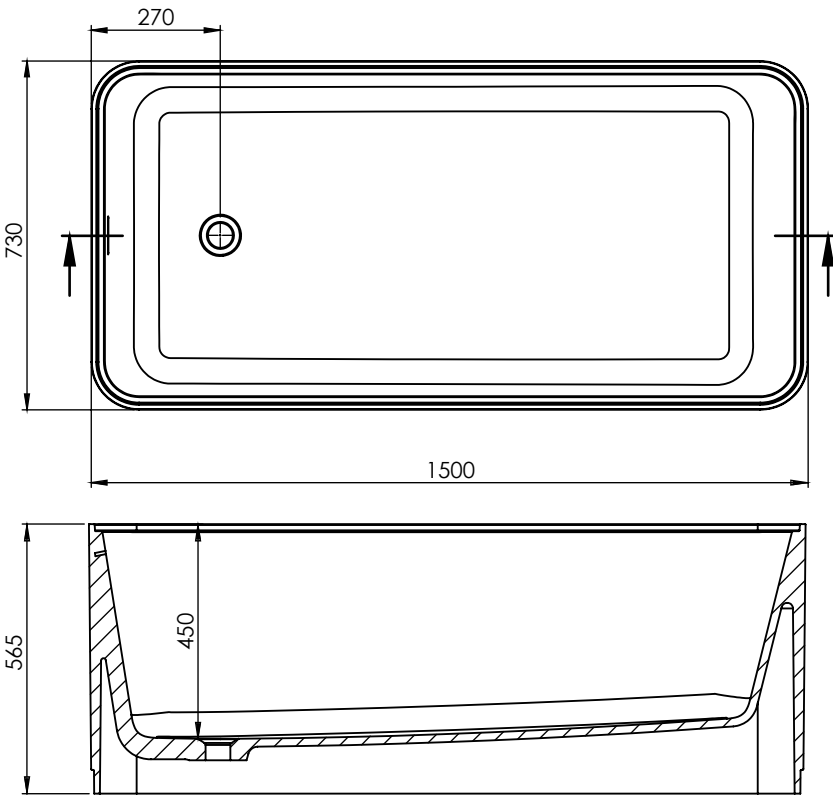


Dimensions	1790x805x788
Overflow	external
Net weight	100
Capacity	150
Number of pieces on a pallet	1
Complete with	frame, legs, siphon, external overflow (brass or chrome)



Glow

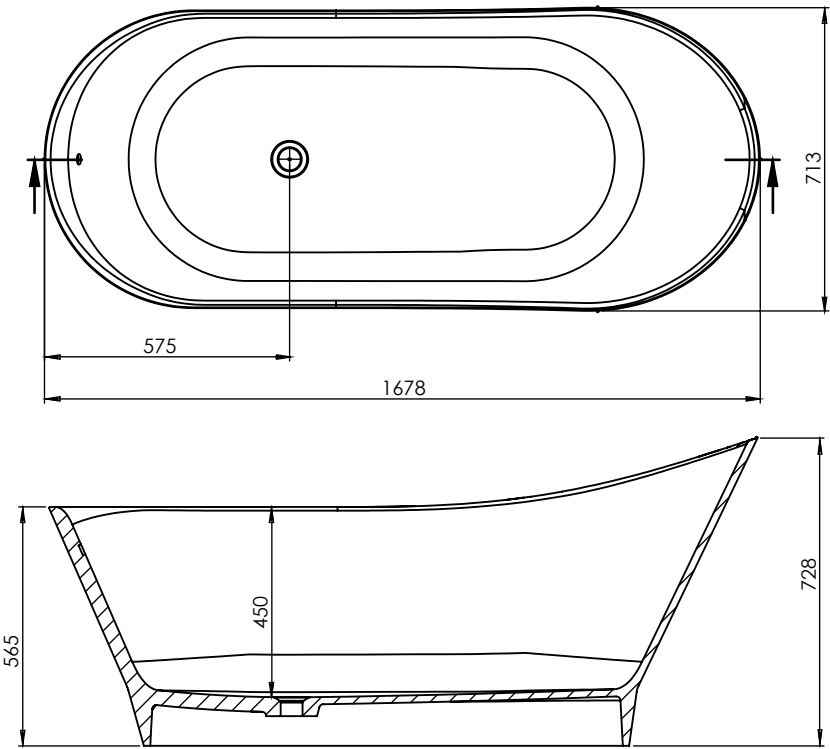
Freestanding bathtub



Dimensions	1500x730x565
Overflow	integrated transfer
Net weight	195
Capacity	320
Number of pieces on a pallet	1
Complete with	cast shelf, siphon



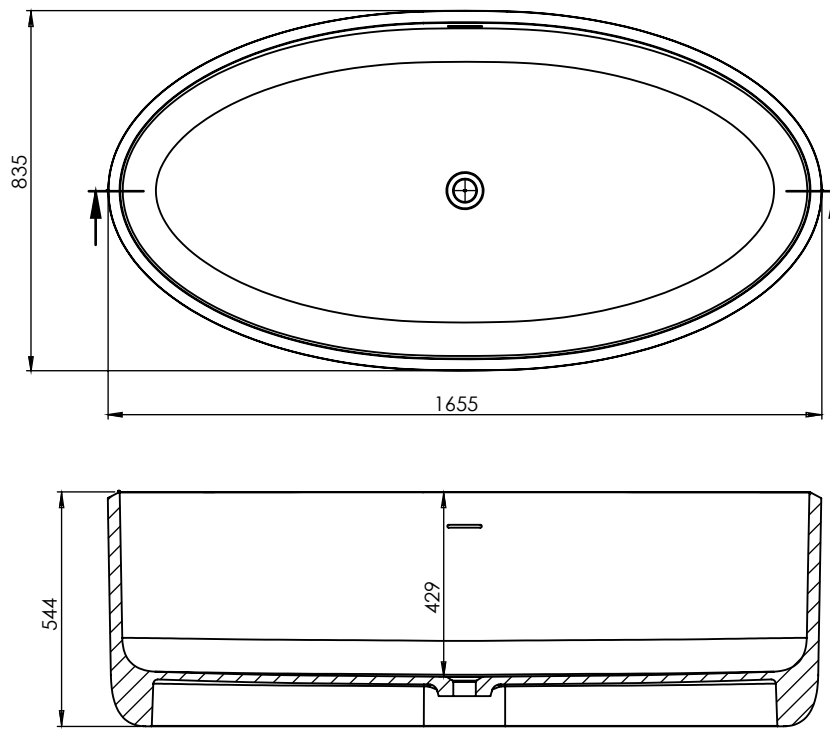
Cozy
Freestanding bathtub



Dimensions	1678x713x728
Overflow	integrated transfer
Net weight	120
Capacity	220
Number of pieces on a pallet	1
Complete with	siphon



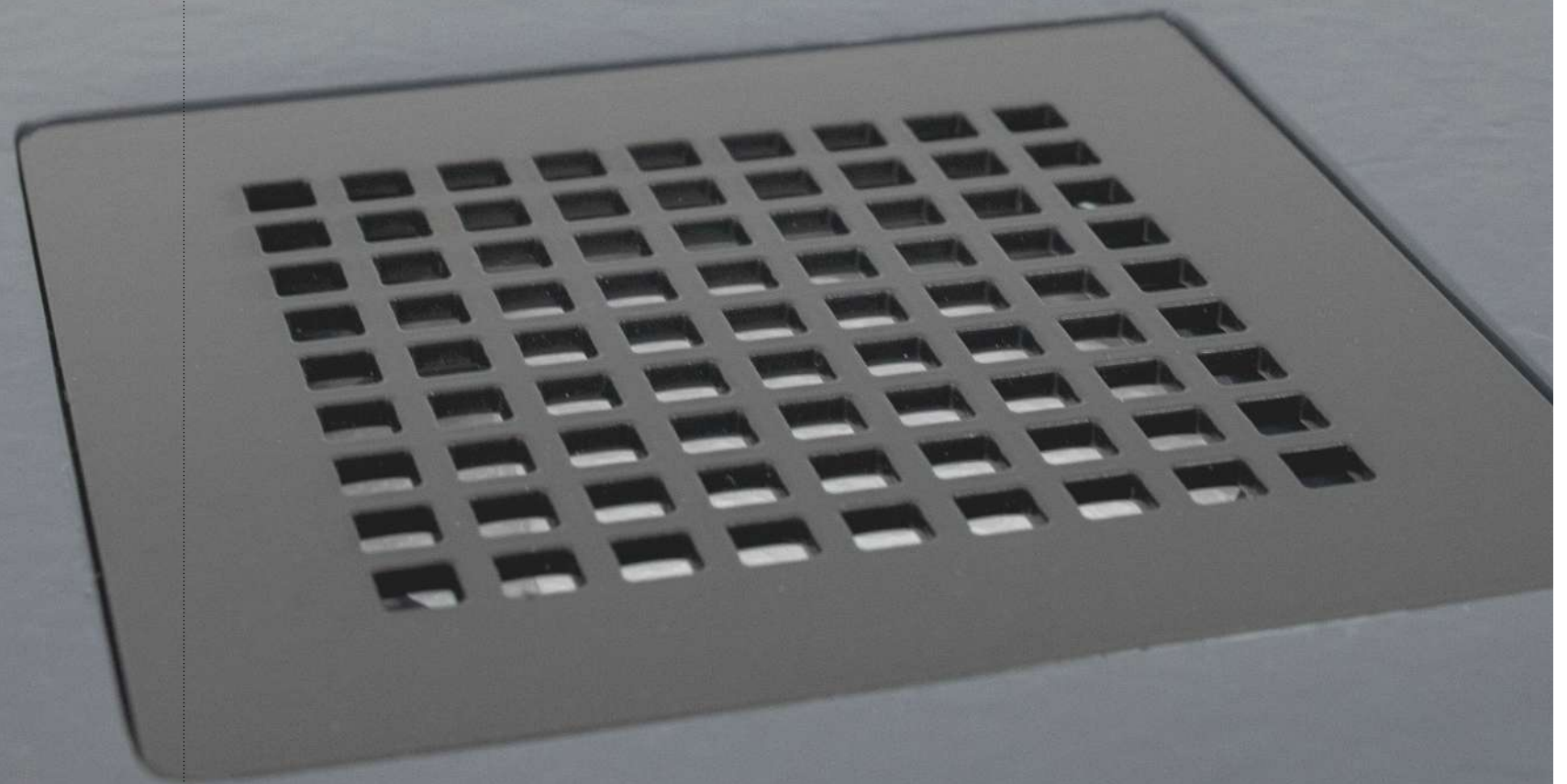
Space
Freestanding bathtub



Dimensions	1655x835x544
Overflow	integrated transfer
Net weight	215
Capacity	320
Number of pieces on a pallet	1
Complete with	siphon

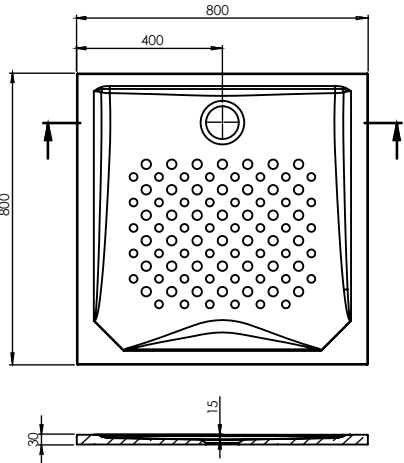
Shower trays

Our synthetic marble shower trays are designed with attention to every detail. The Dremex catalog includes square and semicircular shower trays in many different sizes. We produce them based on the same technology as the washbasins, so they can be used for many years without losing their appearance. Their surfaces have increased resistance to mechanical damage and chemical agents, and most importantly, they are fully anti-slip. At the customer's request, we make shower trays in various colors, structures and sizes.





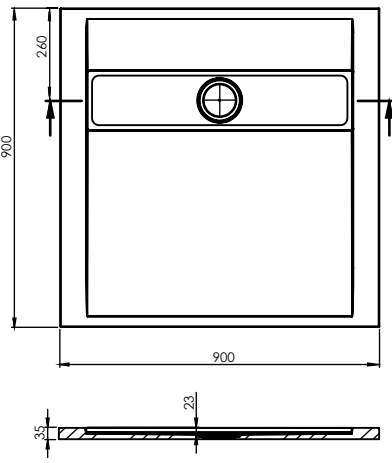
Lion 80x80



Dimensions	800x800x30
Net weight	26
Number of pieces on a pallet	10
Included	-



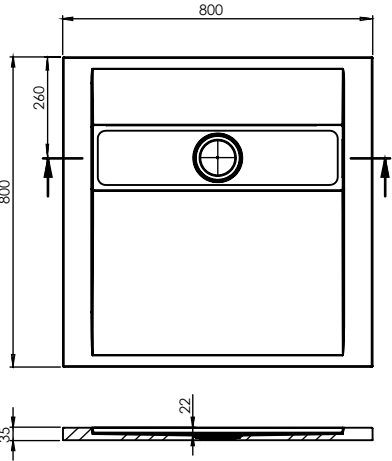
Galaxy 90x90



Dimensions	900x900x35
Net weight	42
Number of pieces on a pallet	10
Included	inox plate



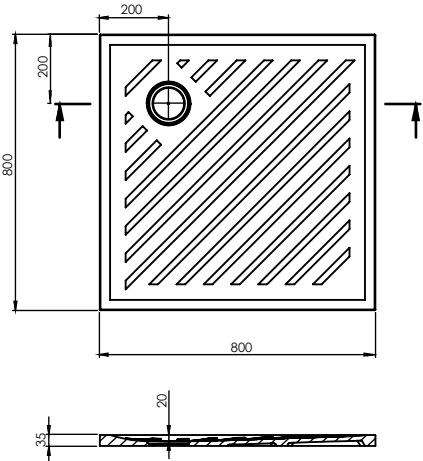
Galaxy 80x80



Dimensions	800x800x35
Net weight	30
Number of pieces on a pallet	10
Included	inox plate



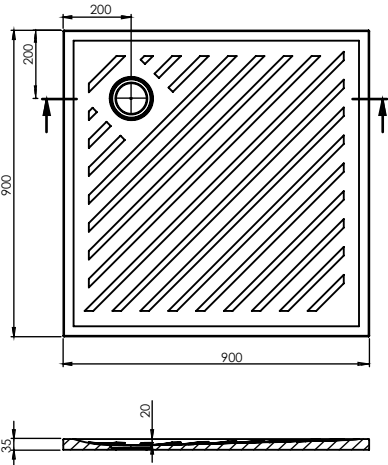
Stella 80x80



Dimensions	800x800x35
Net weight	30
Number of pieces on a pallet	10
Included	-



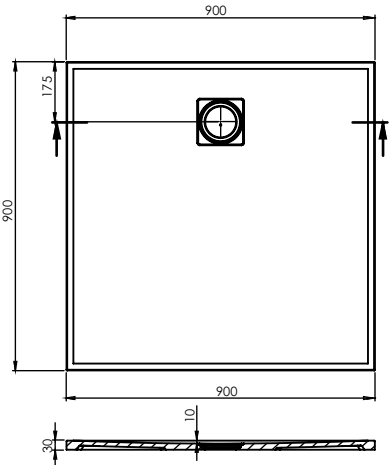
Stella 90x90



Dimensions	900x900x35
Net weight	42
Number of pieces on a pallet	10
Included	-



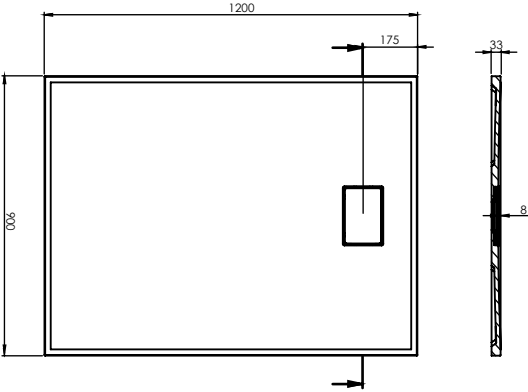
Woodi 90x90



Dimensions	900x900x30
Net weight	38
Number of pieces on a pallet	10
Included	inox plate



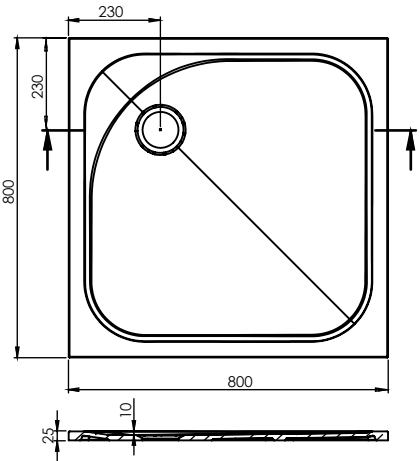
Flax 90x120



Dimensions	900x1200x33
Net weight	51
Number of pieces on a pallet	10
Included	cast plate



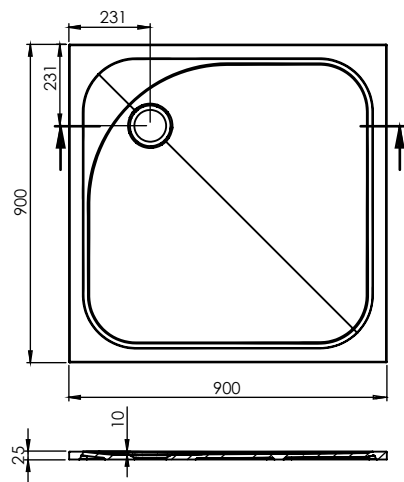
Bravo 80x80



Dimensions	800x800x25
Net weight	17,5
Number of pieces on a pallet	10
Included	-



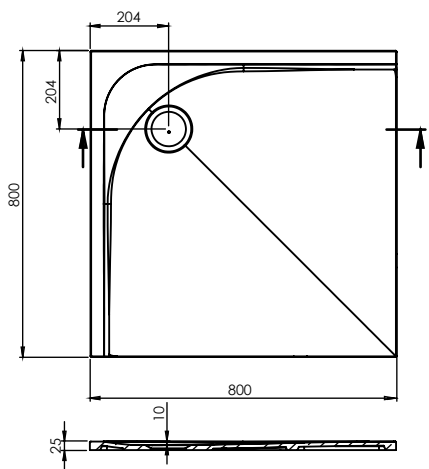
Bravo 90x90



Dimensions	900x900x25
Net weight	21,5
Number of pieces on a pallet	10
Included	-



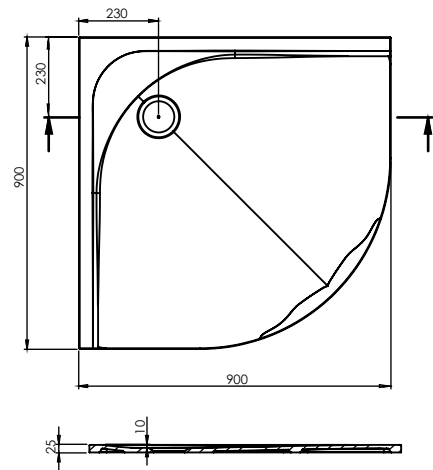
Cayen 80x80



Dimensions	800x800x25
Net weight	17,5
Number of pieces on a pallet	10
Included	-



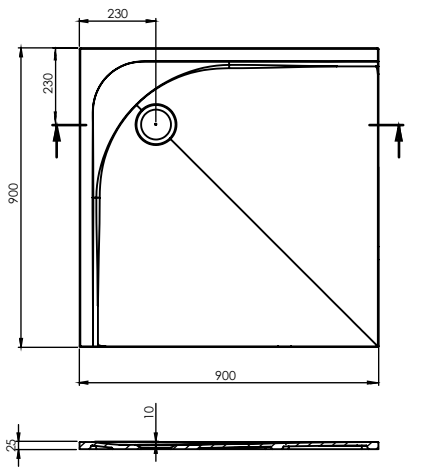
Fiesta 90x90



Dimensions	900x900x25
Net weight	20,5
Number of pieces on a pallet	10
Included	-



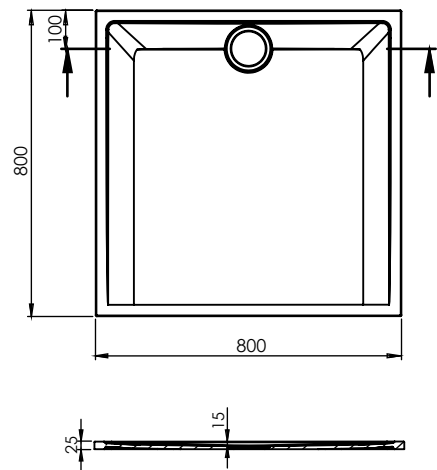
Cayen 90x90



Dimensions	900x900x25
Net weight	22,5
Number of pieces on a pallet	10
Included	-



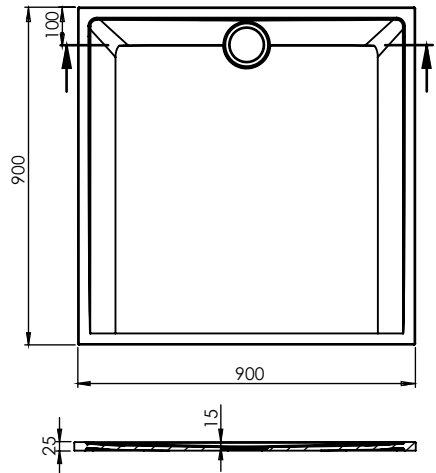
Impresa 80x80



Dimensions	800x800x25
Net weight	17
Number of pieces on a pallet	10
Included	-



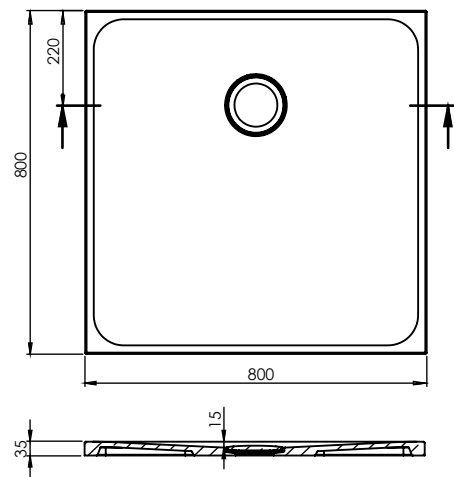
Impresa 90x90



Dimensions	900x900x25
Net weight	21,5
Number of pieces on a pallet	10
Included	-



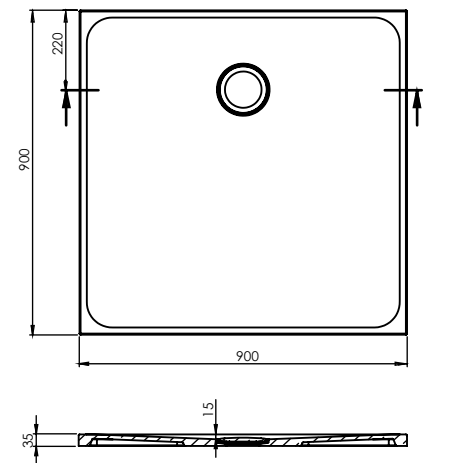
Mirra 80x80



Dimensions	800x800x35
Net weight	22
Number of pieces on a pallet	10
Included	cast plate



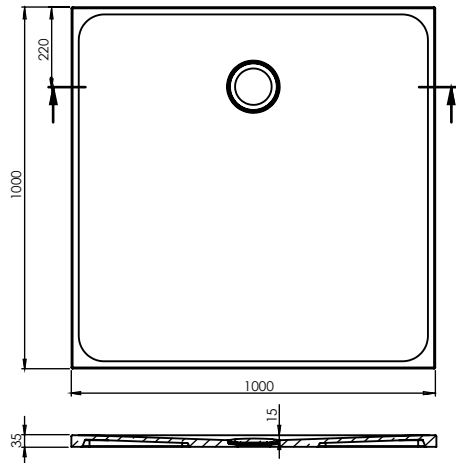
Mirra 90x90



Dimensions	900x900x35
Net weight	26
Number of pieces on a pallet	10
Included	cast plate



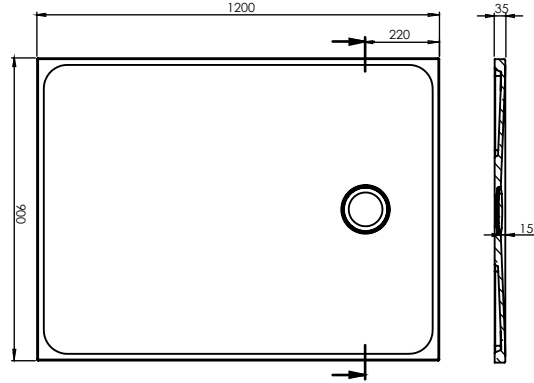
Mirra 100x100



Dimensions	1000x1000x35
Net weight	31
Number of pieces on a pallet	10
Included	cast plate



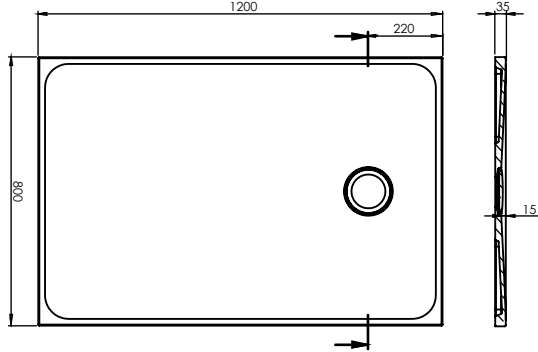
Mirra 90x120



Dimensions	900x1200x35
Net weight	33
Number of pieces on a pallet	10
Included	cast plate



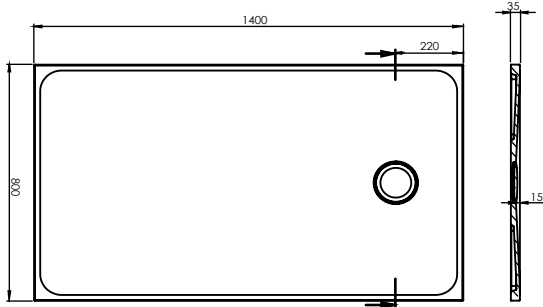
Mirra 80x120



Dimensions	800x1200x35
Net weight	30
Number of pieces on a pallet	10
Included	cast plate



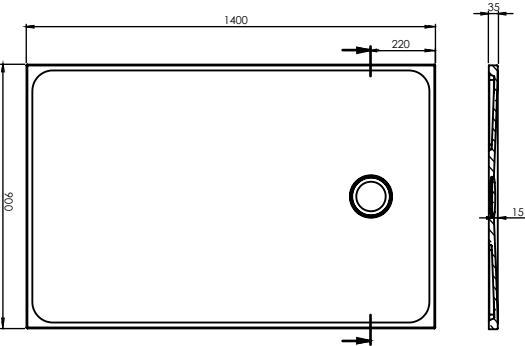
Mirra 80x140



Dimensions	800x1400x35
Net weight	34,5
Number of pieces on a pallet	10
Included	cast plate



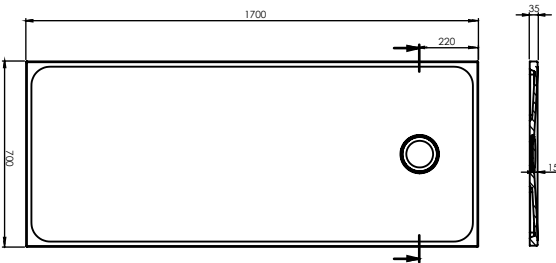
Mirra 90x140



Dimensions	900x1400x35
Net weight	38
Number of pieces on a pallet	10
Included	cast plate



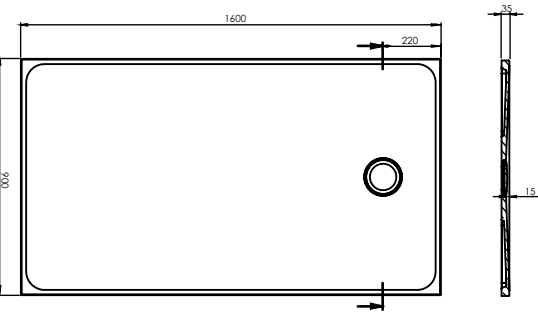
Mirra 70x170



Dimensions	700x1700x35
Net weight	37
Number of pieces on a pallet	10
Included	cast plate



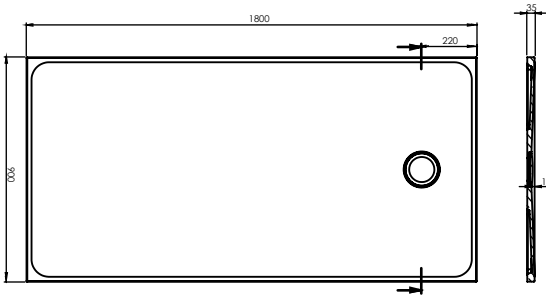
Mirra 90x160



Dimensions	900x1600x35
Net weight	44
Number of pieces on a pallet	10
Included	cast plate



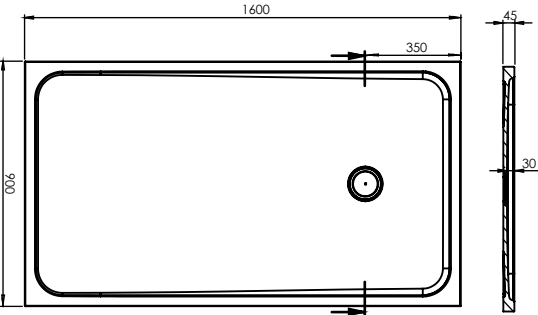
Mirra 90x180



Dimensions	900x1800x35
Net weight	48,5
Number of pieces on a pallet	10
Included	cast plate



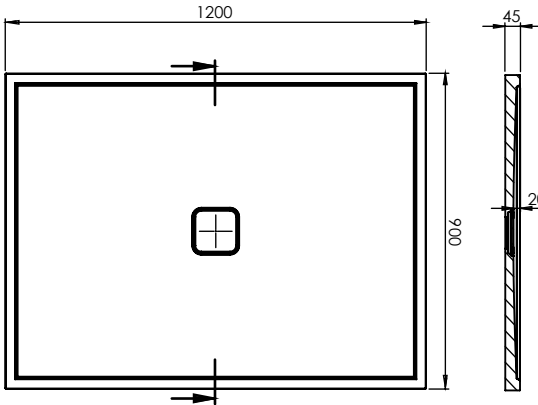
Glow 90x160



Dimensions	900x1600x45
Net weight	62
Number of pieces on a pallet	10
Included	-



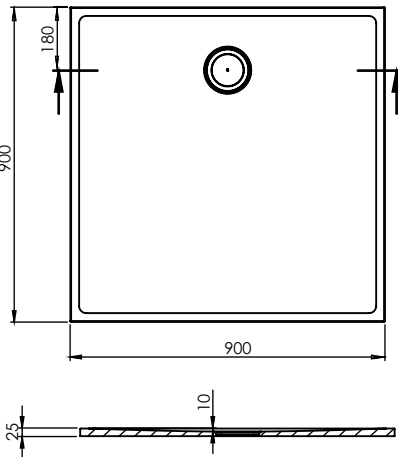
Space 90x120



Dimensions	900x1200x45
Net weight	41
Number of pieces on a pallet	10
Included	cast plate



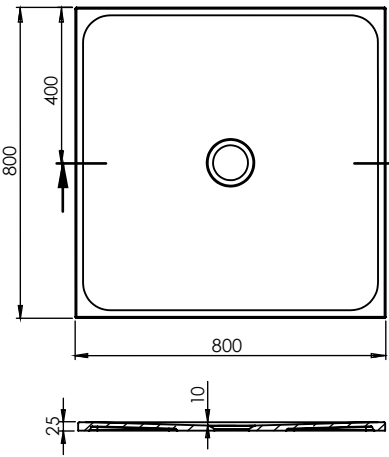
Cozy 90x90



Dimensions	900x900x25
Net weight	28,5
Number of pieces on a pallet	10
Included	cast plate



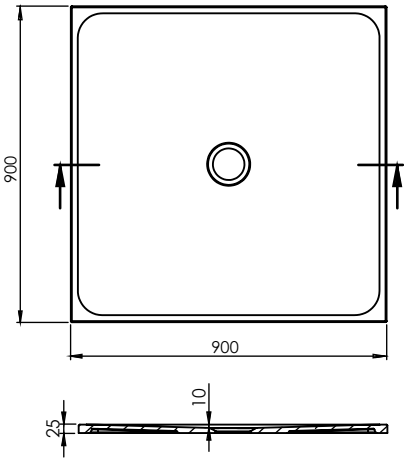
Xara 80x80



Dimensions	800x800x25
Net weight	17
Number of pieces on a pallet	10
Included	-



Xara 90x90



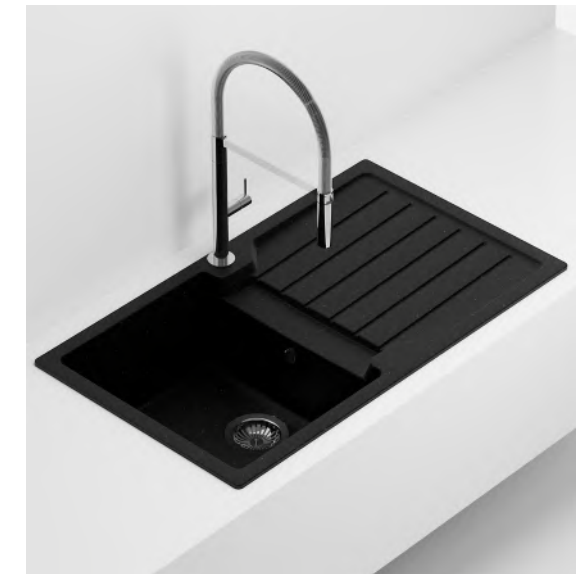
Dimensions	900x900x25
Net weight	21,5
Number of pieces on a pallet	10
Included	-



Sinks

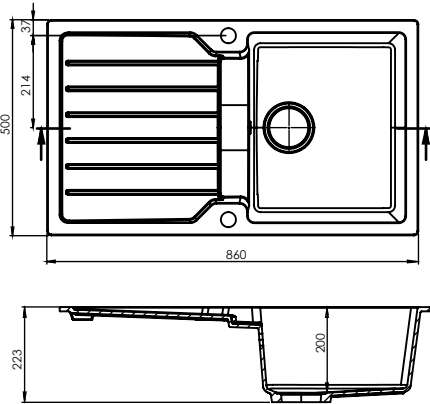
Dremex is a producer of the highest quality quartz sinks. The latest technologies and an extensive technological park allow for the production of single-chamber, one-and-a-half, two-chamber, corner, suspended or put-on sinks. We make them in four quartz colors.





Venezia D-100

Built-in sink with drainer

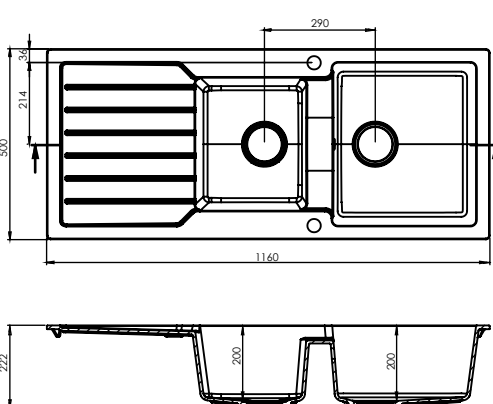


Dimensions	860x500x223
Overflow	external
Net weight	12
Number of pieces on a pallet	12
Complete with	siphon

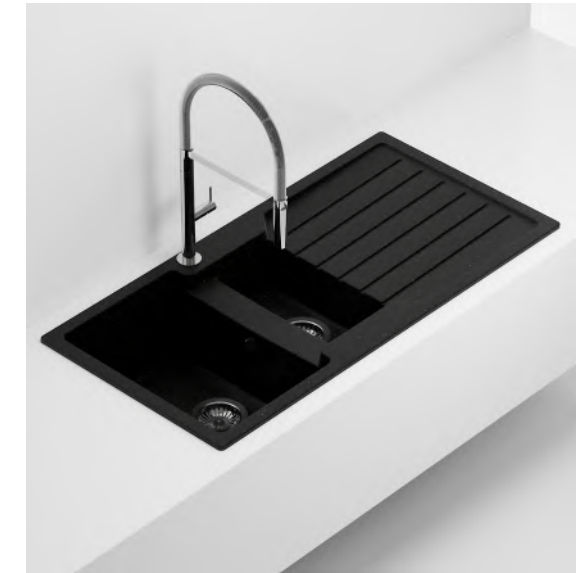


Venezia D-200

Built-in sink with drainer

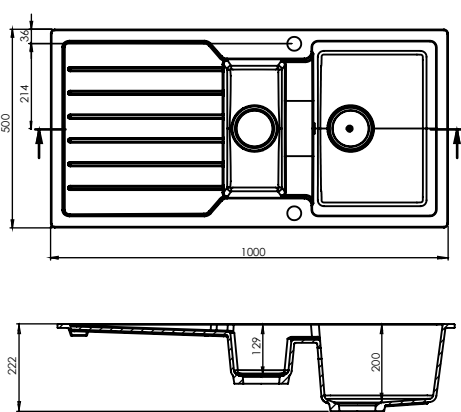


Dimensions	1160x500x222
Overflow	external
Net weight	17,5
Number of pieces on a pallet	12
Complete with	siphon



Venezia D-150

Built-in sink with drainer

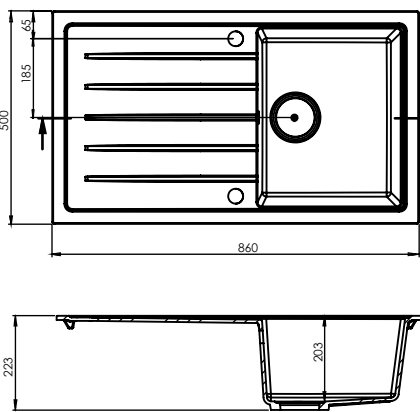


Dimensions	1000x500x222
Overflow	external
Net weight	14,5
Number of pieces on a pallet	12
Complete with	siphon



Portofino D-100

Built-in sink with drainer

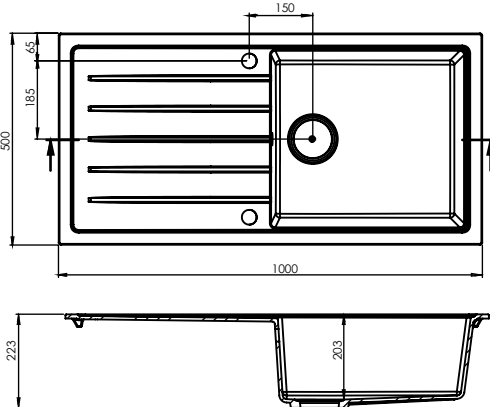


Dimensions	860x500x223
Overflow	external
Net weight	12
Number of pieces on a pallet	12
Complete with	siphon



Portofino D-100 L

Built-in sink with drainer

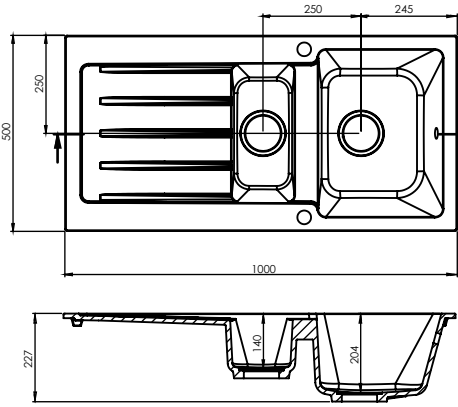


Dimensions	1000x500x223
Overflow	external
Net weight	13
Number of pieces on a pallet	12
Complete with	siphon



Milano D-150

Built-in sink with drainer

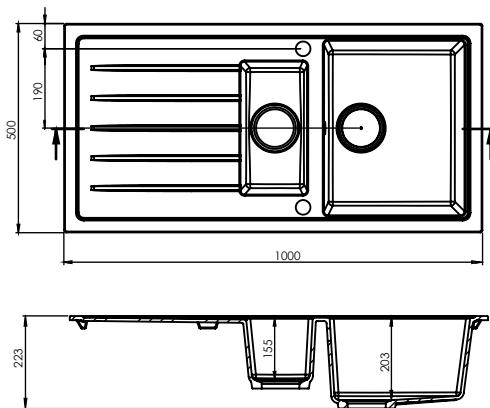


Dimensions	1000x500x227
Overflow	no
Net weight	20
Number of pieces on a pallet	12
Complete with	siphon



Portofino D-150

Built-in sink with drainer

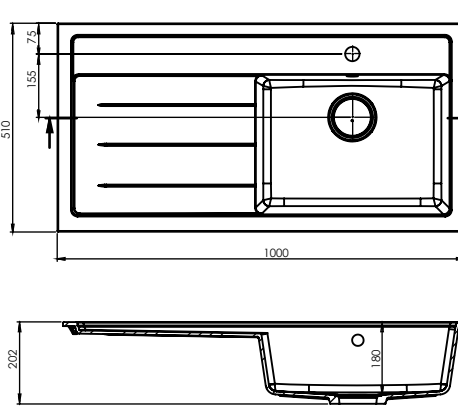


Dimensions	1000x500x223
Overflow	external
Net weight	15,5
Number of pieces on a pallet	12
Complete with	siphon



Riva D-100

Built-in sink with drainer

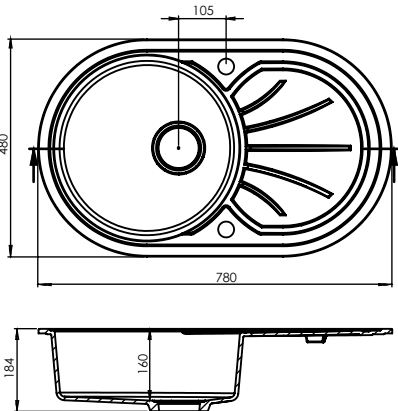


Dimensions	1000x510x202
Overflow	external
Net weight	13
Number of pieces on a pallet	12
Complete with	siphon



Julietta S-100

Built-in sink with drainer

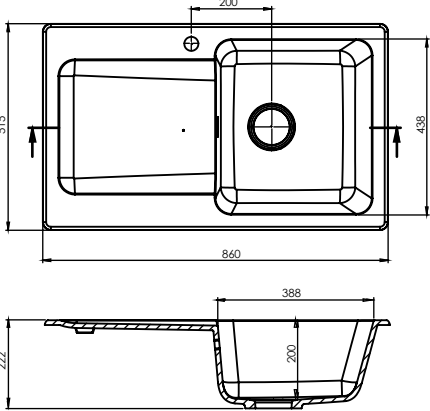


Dimensions	780x480x184
Overflow	no
Net weight	9
Number of pieces on a pallet	12
Complete with	siphon



Kathy D-100

Built-in sink with drainer

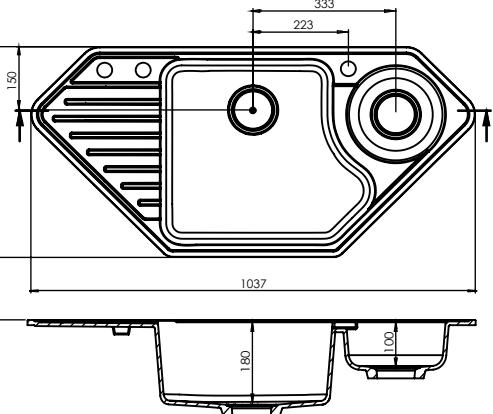


Dimensions	860x515x222
Overflow	external
Net weight	15,5
Number of pieces on a pallet	12
Complete with	siphon



Clio D-150

Built-in sink with drainer

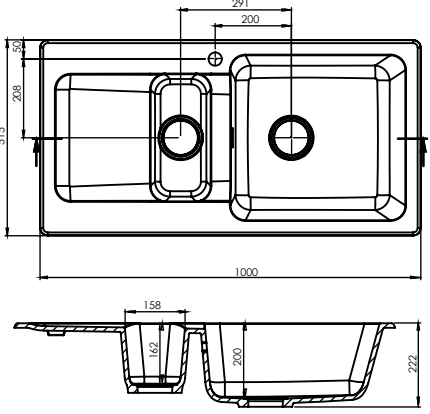


Dimensions	1037x500x204
Overflow	no
Net weight	12
Number of pieces on a pallet	12
Complete with	siphon



Kathy D-150

Built-in sink with drainer

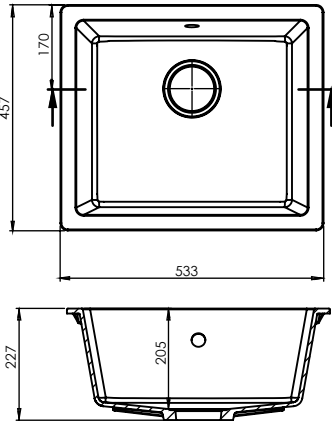


Dimensions	1000x515x222
Overflow	external
Net weight	20
Number of pieces on a pallet	12
Complete with	siphon



Modena D-100

Suspended + built-in sink

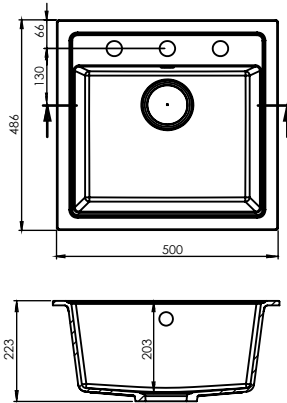


Dimensions	533x457x227
Overflow	external
Net weight	8
Number of pieces on a pallet	12
Complete with	siphon



Modena D-100 HB

Built-in sink



Dimensions	500x486x223
Overflow	external
Net weight	8,5
Number of pieces on a pallet	12
Complete with	siphon



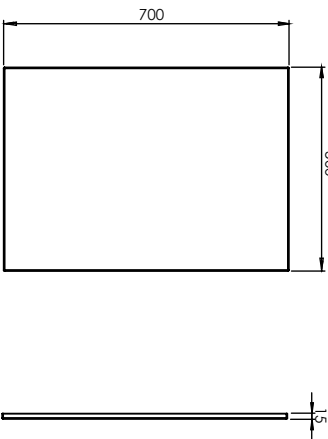
Countertops

Our assortment includes many types of top-quality worktops with various finishes. At the customer's request, the countertops can be made of materials such as gelcoat, Solid Surface and quartz. Various color versions of our products are also available. Contact us on custom-made countertops.





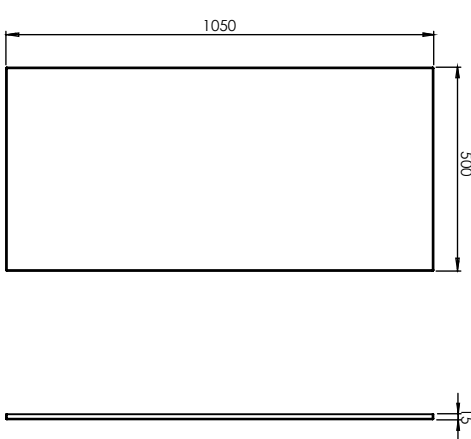
Table top 70



Dimensions	700x500x15
Net weight	9,5
Number of pieces on a pallet	10



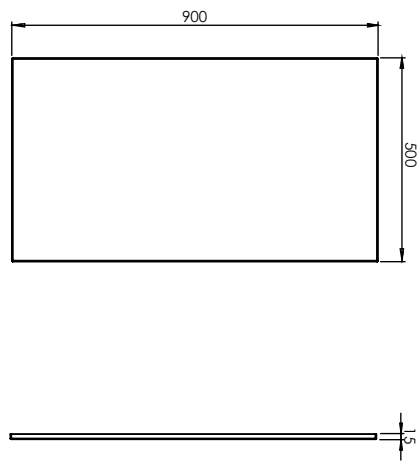
Table top 105



Dimensions	1050x500x15
Net weight	14,3
Number of pieces on a pallet	10



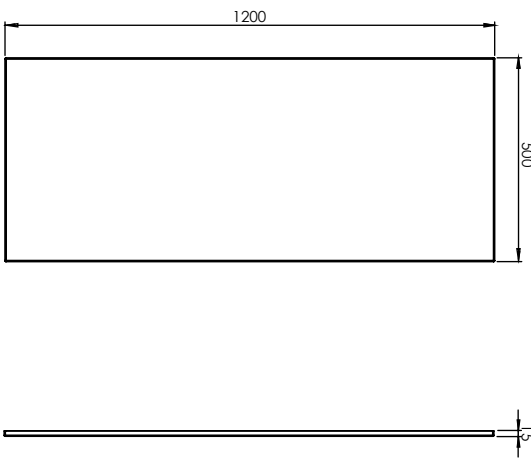
Table top 90



Dimensions	900x500x15
Net weight	12,5
Number of pieces on a pallet	10



Table top 120



Dimensions	1200x500x15
Net weight	16,3
Number of pieces on a pallet	10

Our colors

Design is not only a modern form and original shape, but also a color that matches the style and purpose of the space. Thanks to this, a washbasin, bathtub or shower tray can perfectly complement the entire bathroom. Properly selected color makes each interior take on an individual character.



The colors

Our production is dominated by a wide range of whites, from cool to warm shades: gray, beige or blue. We also make products in black hues. At the customer’s special request, we can make a project in any color.

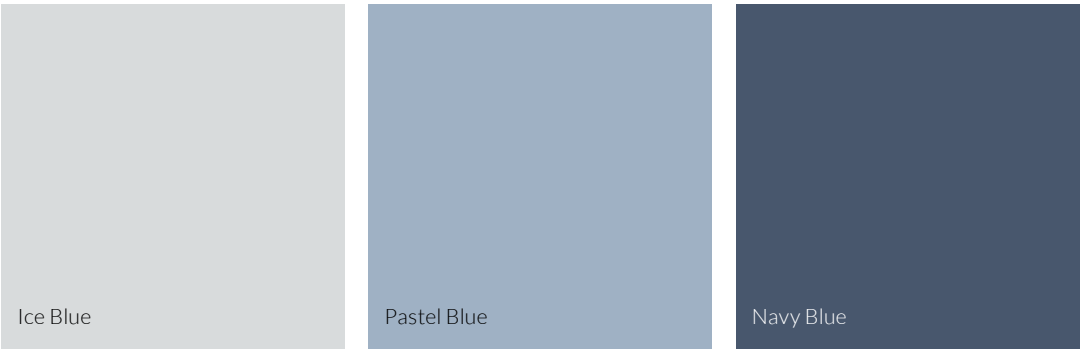
Shades of white:



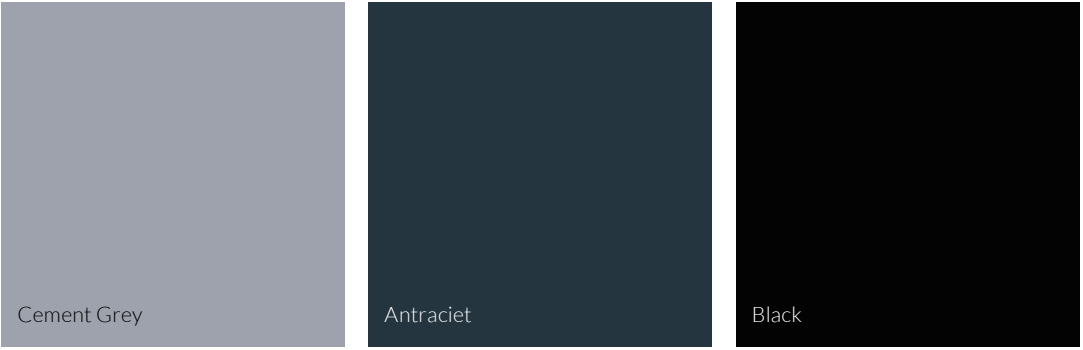
Shades of beige:



Shades of blue:



Shades of gray:

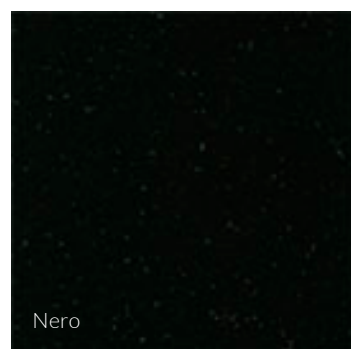
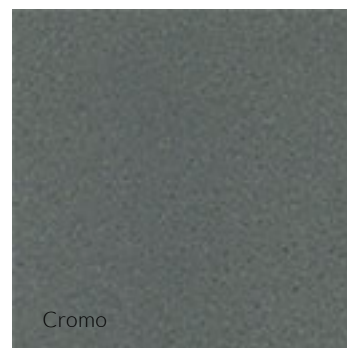
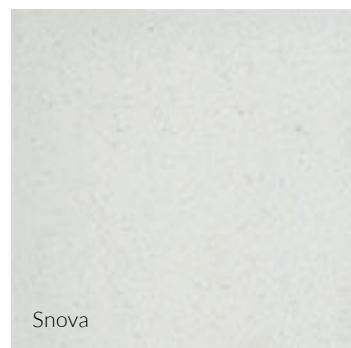


All colors presented in the catalog are available in gloss and matt. Both finishes will be a perfect complement to your offer.

Quartz colors

As a manufacturer of kitchen sinks, bathroom countertops and washbasins made of quartz, we offer a wide range of colors of sanitary products in this material.

Shades of quartz:



Maintenance

Glossy products

During washing products with a gelcoat surface, do not use abrasives or scrubbed powders. Abrasives can scratch surface - it will cause build-up the precipitate. Also, do not use sharp sponges, chemicals containing strong acids and solvents, such as acetone, to clean the surface.

Any stains from strong coloring agents should be removed from the surface as soon as possible, and if that does not help, try to wash them off first with a soft towel and a solution of soapy water. It is also important to avoid contact of the surface with hot temperatures, this may cause permanent damage or discoloration of the surface.

Matt products

To ensure a long-lasting matting effect, avoid too much friction during cleaning. Do not wipe the surface in a circular motion- this may cause the surface to shine. Wipe it with a gentle back and forth movement.

It is important to rinse the surface with water after each use and dry it with a paper or microfiber towel. This is to prevent mineral or soapy precipitates from building up on the matte surface. For daily use, it is recommended to use washing-up liquid or soap in combination with water. Always test all cleaning agents in an invisible area.

In the case of heavier soiling, use water and cleaning agents with delicate abrasives. You can use a wire rubber, and the whole process should be finished with careful surface drying.

Avoid placing hot objects directly on a matte surface. Also, aggressive chemicals and dyes in food products can cause discoloration or damage.

Cooperation

Thanks to many years of experience, we know how to fully adapt the product to the needs of our customers. We provide advice and professionalism at every stage of project implementation, starting from the initial consultation. Our products have approvals and certificates that allow them to be admitted for public use.

What is our competitive advantage - the fact that in most cases we implement individual projects of our clients. We also offer "brand label" cooperation, i.e. the possibility of production with the logo of our client - we, as a producer, remain anonymous.

We encourage you to contact us by phone and e-mail via our website:
www.dremex.com.pl to start collaboration with Dremex Sp. z o. o.

Cooperation stages:

- 
1 Initial consultation
- 
2 Our designers create 2d and 3D models
- 
3 Acceptance of the project by the client
- 
4 Preparation of a light 1:1 scale prototype
- 
5 Acceptance of the project and start of production
- 
6 Product casting
- 
7 Finishing the product
- 
8 Products delivery to the customer

Visit our website:

www.dremex.com.pl



P.W. DREMEX Sp. z o.o.

ul. Pod Borem 15

36-060 Głogów Małopolski

Tel.: (+48) 17 855 26 07